



# AUCTION

**LEADING THE INDUSTRY SINCE 1945**

**Wednesday – December 12, 2018 – 5:00 PM**

**ATTENTION INVESTOR OR HANDYMAN!**

## **4 Wooded Acres W/ Handyman Home & Bank Barn**

**Zoned R-3 – Near The North Reservoir & Long Lake Channel (Portage Lakes)  
Coventry Twp. – Coventry Schools – Summit Co.**

**Absolute auction, all sells to the highest bidder on location:**

**3351 Cormany Rd., Akron, OH 44319**

**Directions:** Take RT 224 west of Akron to RT 93 exit then south to Cormany Rd. or take Cormany Rd. north of Portage Lakes Dr. to auction. Watch for KIKO signs.



Information is believed to be accurate but not guaranteed.



**330.455.9357 • kikoauctions.com**







**KIKO AUCTIONEERS**

2722 Fulton Dr. NW, Canton, OH 44718

[kikoauctions.com](http://kikoauctions.com)

**Wednesday – December 12, 2018 – 5:00 PM**

**4 Wooded Acres With Handyman Home & Bank Barn – Zoned R-3  
Attention Investor Or Handyman!  
Near The North Reservoir & Long Lake  
Channel (Portage Lakes) – Coventry Twp.  
Coventry Schools – Summit Co.**

Akron, OH



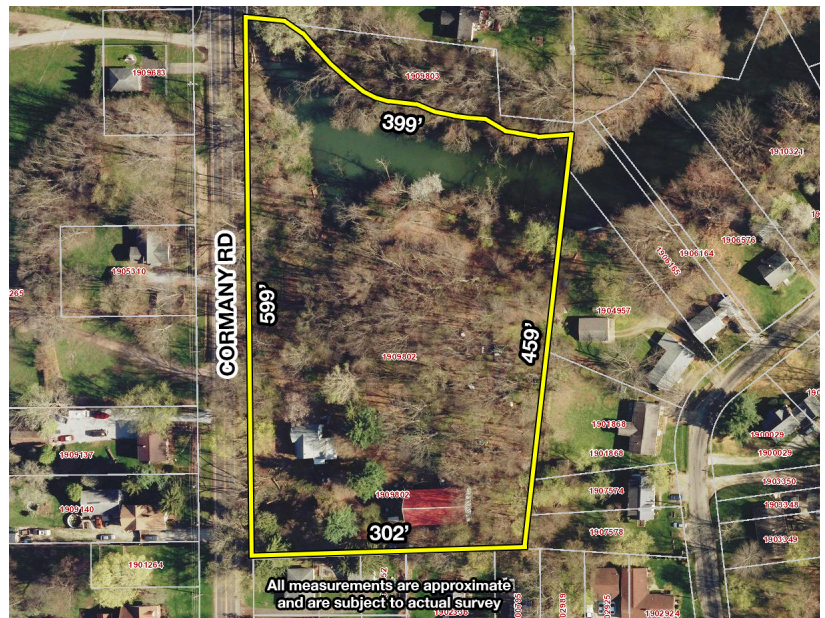
**Members – State and National Auctioneers Association**



**REAL ESTATE:** 3.91 wooded acres with handyman home featuring eat-in kitchen, living room, roughed-in & plumbed for first floor laundry room and full bath. Upstairs has 3 bedrooms and full bath. Full divided basement with 100-amp electric, gas hot water heat (needs new plumbing), hot water tank, water softener and wood burning stove. Home is ready for updating. 40' x 60' bank barn with electric and new metal roof in 2014. Property has a lot of charm and would be nice for any type of hobbies and animals. Lots of wildlife with woods and water. Opportunity knocking!

**NOTE:** For more information or help with financing contact auctioneers. Visit our website at [www.kikoauctions.com](http://www.kikoauctions.com) to view additional pictures.

**TERMS ON REAL ESTATE:** 15% down auction day, balance due at closing. A 10% buyer's premium will be added to the highest bid to establish the purchase price, which goes to the seller. Any desired inspections must be made prior to bidding. All information contained herein was derived from sources believed to be correct. Information is believed to be accurate but not guaranteed.



All measurements are approximate  
and are subject to actual survey



Auctioneer/Realtor®

**GENE KIKO**

330-495-0041

[genekiko@kikocompany.com](mailto:genekiko@kikocompany.com)



Realtor®

**TINA SLATZER**

330-280-2900

[tslatzer@kikocompany.com](mailto:tslatzer@kikocompany.com)



**330.455.9357 • [kikoauctions.com](http://kikoauctions.com)**

